

Sample: 1810CH0054.0177

Strain: None

Batch#: ; Batch Size: - grams

Sample Received: 10/02/2018; Report Created: 10/05/2018; Expires: 10/05/2019

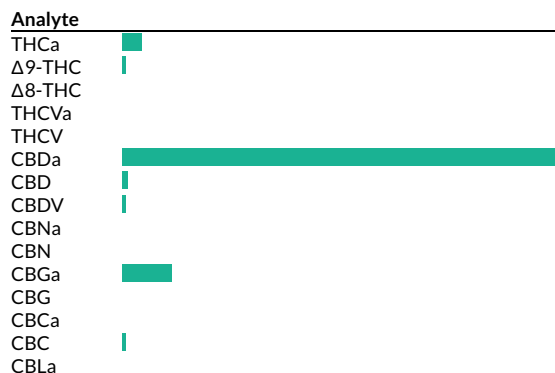
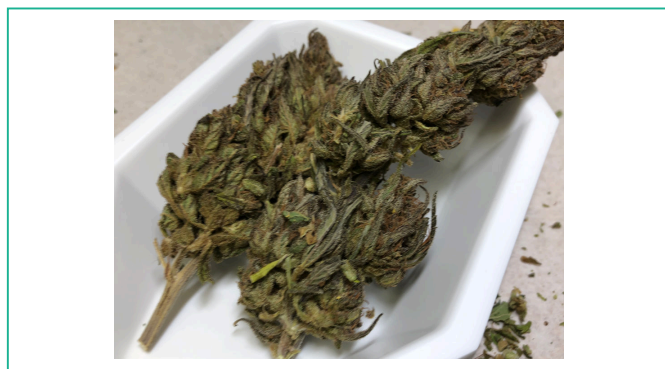
Harvest/Production Date:

Sampling: Random; Environment: Room Temp

## Special Sauce-BD-Bud

Plant, Flower - Cured, Outdoor

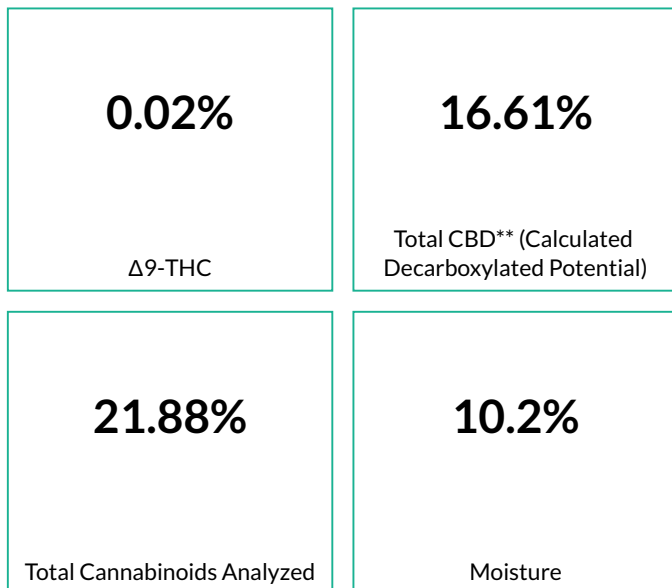
Harvest Process Lot: ; METRC Batch: ; METRC Sample:



## Cannabinoids

136 HPLC4 20181003-4  
10/03/2018

Pass



Analyte	LOQ	Mass	Mass
	mg/g	%	mg/g
THCa	0.2	0.77	7.7
Δ9-THC	0.2	0.02	0.2
Δ8-THC	0.2	<LOQ	<LOQ
THCVa	0.2	<LOQ	<LOQ
THCV	0.2	<LOQ	<LOQ
CBDa	0.2	18.65	186.5
CBD	0.2	0.25	2.5
CBDV	0.2	0.03	0.3
CBNa	0.2	<LOQ	<LOQ
CBN	0.2	<LOQ	<LOQ
CBGa	0.2	2.14	21.4
CBG	0.2	<LOQ	<LOQ
CBCa	0.2	<LOQ	<LOQ
CBC	0.2	0.02	0.2
CBLa	0.2	<LOQ	<LOQ
<b>Total</b>		<b>21.88</b>	<b>218.8</b>

\*Total THC = THCa \* 0.877 + d9-THC. \*\*Total CBD = CBDa \* 0.877 + CBD. LOQ = Limit of Quantification; NR = Not Reported; ND = Not Detected

Sample: 1810CH0054.0177

Strain: None

Batch#: ; Batch Size: - grams

Sample Received: 10/02/2018; Report Created: 10/05/2018; Expires: 10/05/2019

Harvest/Production Date:

Sampling: Random; Environment: Room Temp

## -Special Sauce-BD-Bud

Plant, Flower - Cured, Outdoor

Harvest Process Lot: ; METRC Batch: ; METRC Sample:



## Terpenes

348 GCFID1 20181005-1

10/05/2018

Analyte	Mass %	Mass mg/g	LOQ %	Analyte	Mass %	Mass mg/g	LOQ %
α-Pinene	0.02	0.2		Isoborneol	<LOQ	<LOQ	
Camphene	<LOQ	<LOQ		Borneol	<LOQ	<LOQ	
Sabinene	<LOQ	<LOQ		Hexahydro Thymol	<LOQ	<LOQ	
(-) -β-Pinene	0.02	0.2		α-Terpineol	0.03	0.3	
β-Myrcene	0.69	6.9	█	γ-Terpineol	<LOQ	<LOQ	
α-Phellandrene	<LOQ	<LOQ		Nerol	<LOQ	<LOQ	
δ-3-Carene	<LOQ	<LOQ		Pulegone	<LOQ	<LOQ	
α-Terpinene	<LOQ	<LOQ		Geraniol	<LOQ	<LOQ	
p-Isopropyltoluene	<LOQ	<LOQ		Farnesene	<LOQ	<LOQ	
δ-Limonene	0.09	0.9	█	α-Cedrene	<LOQ	<LOQ	
Eucalyptol	<LOQ	<LOQ		β-Caryophyllene	0.33	3.3	█
Ocimene 1	<LOQ	<LOQ		α-Humulene	0.11	1.1	█
Ocimene 2	0.12	1.2	█	Valencene	0.02	0.2	
γ-Terpinene	<LOQ	<LOQ		Geranyl Acetate	0.67	6.7	█
Sabinene Hydrate	<LOQ	<LOQ		cis-Nerolidol	0.08	0.8	█
Fenchone	<LOQ	<LOQ		β-Nerolidol	0.10	1.0	█
Terpinolene	<LOQ	<LOQ		trans-Nerolidol	0.04	0.4	
Linalool	0.04	0.4	█	Caryophyllene Oxide	0.04	0.4	
Endo-Fenchyl Alcohol	0.02	0.2		(-) -Guaiol	0.03	0.3	
Camphor	<LOQ	<LOQ		Cedrol	0.01	0.1	
(-) -Isopulegol	0.01	0.1		(-) -α-Bisabolol	0.20	2.0	█

## Primary Aromas



Method: GC-FID; based on dry weight; LOQ = Limit of Quantification; NR = Not Reported; ND = Not Detected

Sample: 1810CH0054.0177

Strain: None

Batch#: ; Batch Size: - grams

Sample Received: 10/02/2018; Report Created: 10/05/2018; Expires: 10/05/2019

Harvest/Production Date:

Sampling: Random; Environment: Room Temp

## Special Sauce-BD-Bud

Plant, Flower - Cured, Outdoor

Harvest Process Lot: ; METRC Batch: ; METRC Sample:



## Quality Control Data

Analytical Batch ID	QC Sample ID	Assay Name	QC Category Name
136 HPLC4 20181003-4	PMB10021802F	Cannabinoids	Blank

### QC Notes

None

Compounds	Blank Result	Blank Max % (LOQ)	Blank Result %	Notes
THCa	0	0.05	<LOQ	-
Δ9-THC	0	0.05	<LOQ	-
CBDa	0	0.05	<LOQ	-
CBD	0	0.05	<LOQ	-



Sample: 1810CH0054.0177

Strain: None

Batch#: ; Batch Size: - grams

Sample Received: 10/02/2018; Report Created: 10/05/2018; Expires: 10/05/2019

Harvest/Production Date:

Sampling: Random; Environment: Room Temp

## Special Sauce-BD-Bud

Plant, Flower - Cured, Outdoor

Harvest Process Lot: ; METRC Batch: ; METRC Sample:



## Quality Control Data

Analytical Batch ID	QC Sample ID	Assay Name	QC Category Name
136 HPLC4 20181003-4	PLCS10021802F	Cannabinoids	Lab Control Sample

### QC Notes

None

Compounds	LCS Result (%)	LCS Spike	LCS % Rec	% Limits	Notes
THCa	6.79	6.57	103.35	70 - 130	-
Δ9-THC	7.29	7.32	99.59	70 - 130	-
CBDa	2.12	2.19	96.8	70 - 130	-
CBD	2.27	2.3	98.7	57 - 143	-



Sample: 1810CH0054.0177

Strain: None

Batch#: ; Batch Size: - grams

Sample Received: 10/02/2018; Report Created: 10/05/2018; Expires: 10/05/2019

Harvest/Production Date:

Sampling: Random; Environment: Room Temp

## Special Sauce-BD-Bud

Plant, Flower - Cured, Outdoor

Harvest Process Lot: ; METRC Batch: ; METRC Sample:



## Quality Control Data

Analytical Batch ID	QC Sample ID	Assay Name	QC Category Name
136 HPLC4 20181003-4	PMS10021802F	Cannabinoids	Spike

### QC Notes

None

Compounds	LOQ	Matrix Duplicate % RPD	Duplicate RPD Notes	Matrix Spike % Rec	% Limits	Notes
THCa	0.02	1.8	<20	92	70 - 130	-
Δ9-THC	0.02	9.9	<20	98	70 - 130	-
CBDa	0.02	15.38	<20	76	70 - 130	-
CBD	0.02	<LOQ	<LOQ	99	70 - 130	-

