

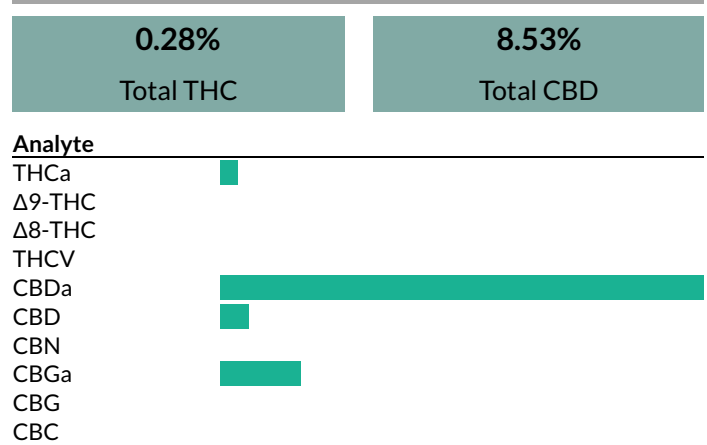
Space Candy Industrial Hemp
Empire Extracts

Sample: 1803PSI0322.04514
 Strain: Space Candy Industrial Hemp
 Plant, Flower - Cured
 Batch#: ; Batch Size: - grams
 Sample Received: 03/23/2018; Report Created: 03/28/2018

Lic. #

Cannabinoid Profile

Major Cannabinoids	Concentration (% by weight)	Error (+/- 10%)
Δ9-THC	<LOQ	+/- 0.00
THCa	0.32%	+/- 0.03
Total THC	0.28%	
CBD	0.55%	+/- 0.06
CBDa	9.09%	+/- 0.91
Total CBD	8.53%	
CBN	<LOQ	+/- 0.00
Minor Cannabinoids	Concentration (% by weight)	Error (+/- 10%)
Δ8-THC	<LOQ	+/- 0.00
CBG	<LOQ	+/- 0.00
CBGa	1.51%	+/- 0.15
CBC	<LOQ	+/- 0.00
THCV	<LOQ	+/- 0.00
Total Cannabinoids	11.47%	
Moisture	8.5%	

Cannabinoid Profile Plot

Macro

Micro

Purity

Foreign Material	Present (Y/N)	Detection Method
Mold, Mildew, Fungus	N	Microscopy
Foreign Matter	N	Microscopy
Pests	N	Microscopy

Notes:

Additional Notes

Method: HPLC/DAD
 Total THC = THCa * 0.877 + d9-THC
 Total CBD = CBDa * 0.877 + CBD
 LOQ = Limit of Quantitation; The reported result is based on a sample weight with the applicable moisture content for that sample; Unless otherwise stated all quality control samples performed within specifications established by the Laboratory.

Click "Share" on your Confident Cannabis results page to share your results on Instagram, Facebook, And Twitter or email! #PSILabs

Tell your customers to scan the QR code here and on your labels to verify the authenticity of your PSI Labs results

