

Green Gum

Sample: 1806PSI0092.09045

Strain: Green Gum

Plant, Flower - Cured

Batch#: ; Batch Size: - grams

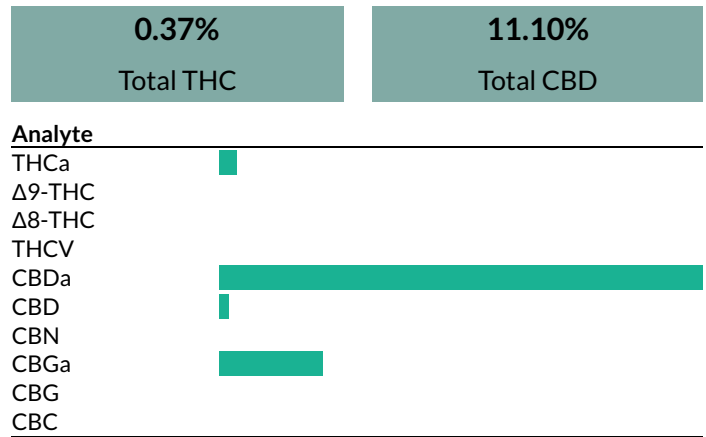
Sample Received: 06/08/2018; Report Created: 06/12/2018

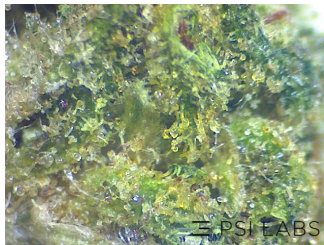
Empire Extracts

Lic. #

Cannabinoid Profile

Major Cannabinoids	Concentration (% by weight)	Error (+/- 10%)
Δ9-THC	<LOQ	+/- 0.00
THCa	0.42%	+/- 0.04
Total THC	0.37%	
CBD	0.23%	+/- 0.02
CBDa	12.39%	+/- 1.24
Total CBD	11.10%	
CBN	<LOQ	+/- 0.00
Minor Cannabinoids	Concentration (% by weight)	Error (+/- 10%)
Δ8-THC	<LOQ	+/- 0.00
CBG	<LOQ	+/- 0.00
CBGa	2.64%	+/- 0.26
CBC	<LOQ	+/- 0.00
THCV	<LOQ	+/- 0.00
Total Cannabinoids	15.69%	
Moisture	7.6%	

Cannabinoid Profile Plot

Macro

Micro

Purity

Foreign Material	Present (Y/N)	Detection Method
Mold, Mildew, Fungus	N	Microscopy
Foreign Matter	N	Microscopy
Pests	N	Microscopy

Notes:

Additional Notes

Method: HPLC/DAD

Total THC = THCa * 0.877 + d9-THC

Total CBD = CBDa * 0.877 + CBD

LOQ = Limit of Quantitation; The reported result is based on a sample weight with the applicable moisture content for that sample; Unless otherwise stated all quality control samples performed within specifications established by the Laboratory.

Click "Share" on your Confident Cannabis results page to share your results on Instagram, Facebook, And Twitter or email! #PSILabs

Tell your customers to scan the QR code here and on your labels to verify the authenticity of your PSI Labs results

