



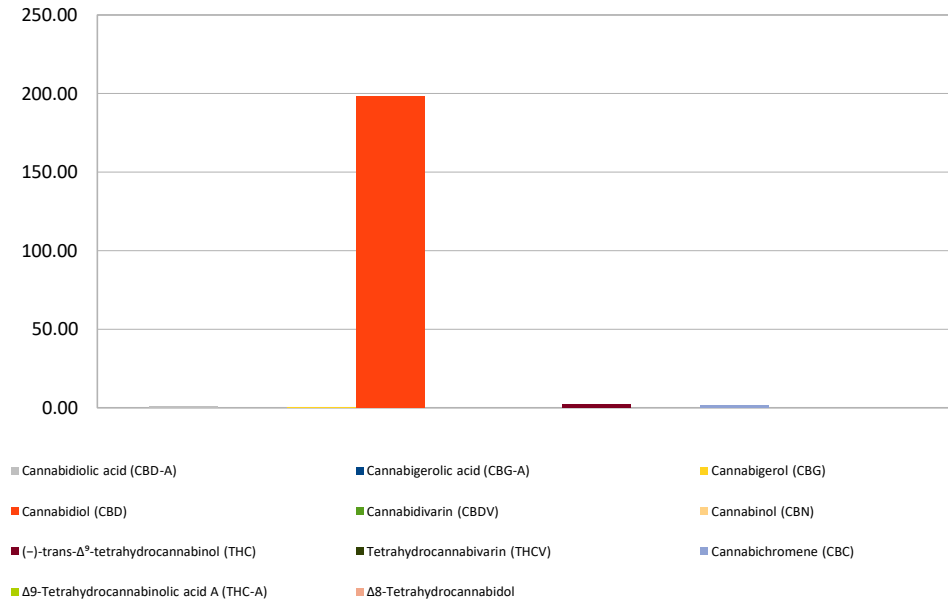
Cannabinoid Profile

Customer: Balance Health Botanicals
Customer Sample ID: EV18306F5
Laboratory Number: 201811-0157
Extraction Technician: RH
Analytical Chemist: RH
Density (g/mL): 0.942

Extraction Date(s):	Analysis Date(s)
11/7/2018	11/7/2018

Cannabinoid (HPLC)		Results	
	LOD (mg/g)	Percent	mg/mL
Δ8-Tetrahydrocannabinol	<0.2		
Cannabidiolic acid (CBD-A)		0.103%	0.97
Cannabigerolic acid (CBG-A)	<0.2		
Cannabigerol (CBG)		0.050%	0.47
Cannabidiol (CBD)		21.076%	198.53
Cannabidivarin (CBDV)	<0.2		
Cannabinol (CBN)	<0.2		
(-)-trans-Δ ⁹ -tetrahydrocannabinol (THC)		0.234%	2.21
Tetrahydrocannabivarin (THCV)	<0.2		
Cannabichromene (CBC)		0.182%	1.71
Δ9-Tetrahydrocannabinolic acid A (THC-A)	<0.2		
Cannabinoids Total		Percent	mg/g
Max Active THC		0.23%	2.34
Max Active CBD		21.17%	211.66
T. Active Cannabinoids		21.54%	215.41
Total Cannabinoids		21.64%	216.44
Ratios			
90.47		:1 CBD to THC	0.01 :1 THC to CBD

Cannabinoid (mg/mL)



Altitude Consulting, LLC utilizes NIST traceable Reference Standards and Certified Reference Material to calibrate analytical instruments along with proven analytical methods. The methods are applied in the most ethical manner following good laboratory practice guidelines. The results of this report are based solely on the sample submitted and cannot be reproduced.